

45/47

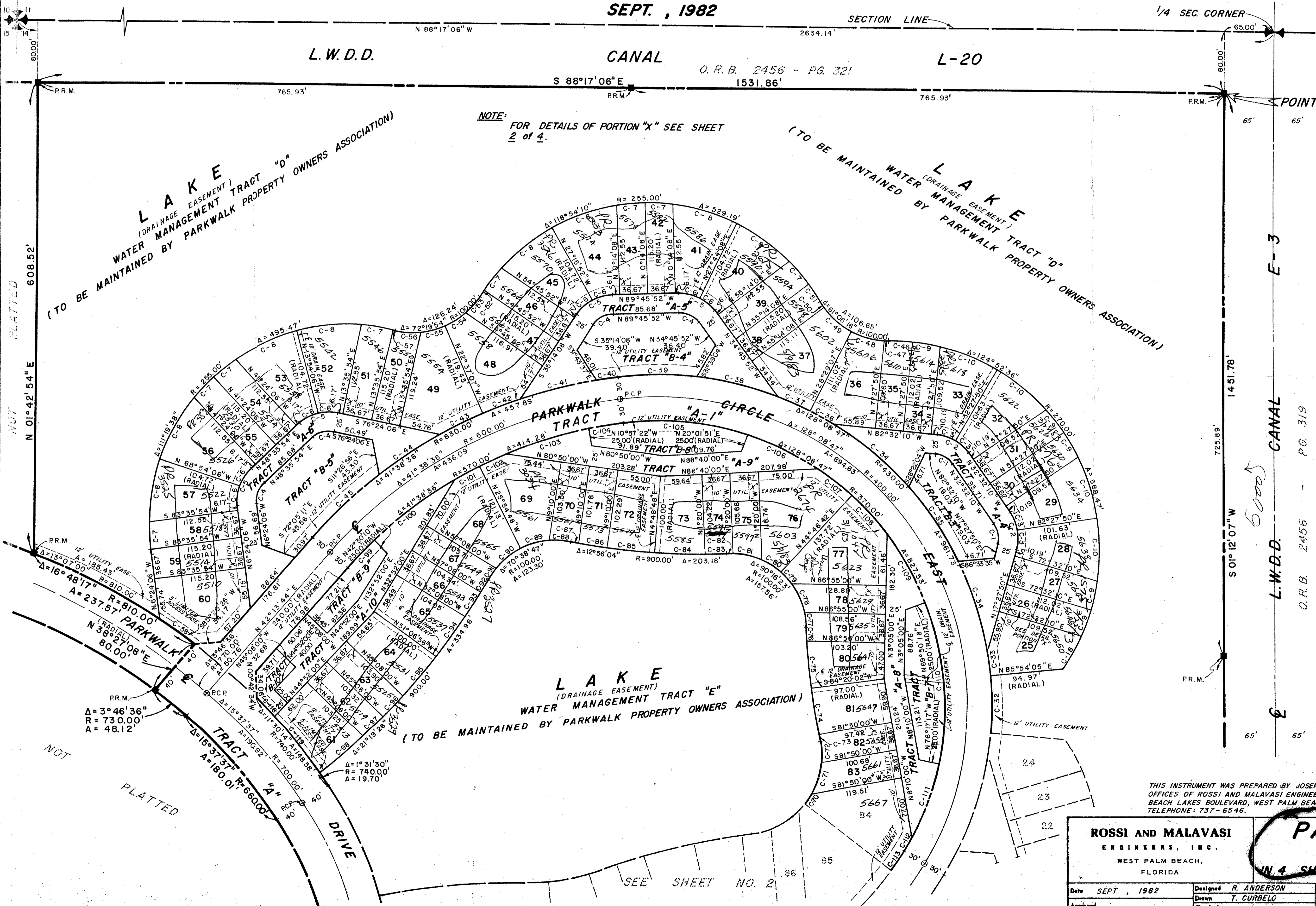
PARKWALK - PLAT NO. 1

BEING THE SIXTH PLAT OF LE CHALET (P.U.D.)
SECTION 14, TOWNSHIP 45 SOUTH, RANGE 42 EAST

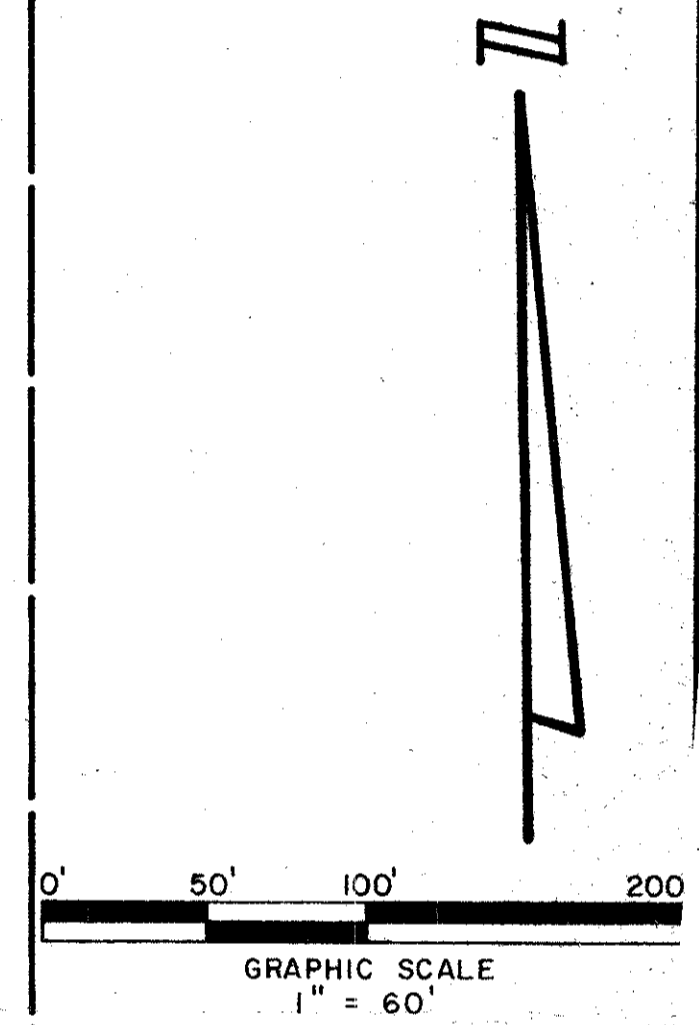
PALM BEACH COUNTY, FLORIDA
SEPT., 1982

47

STATE OF FLORIDA }
COUNTY OF PALM BEACH }
This Plat was filed for record at _____ M.
this _____ day of _____
19 _____, and duly recorded in Plat Book No. _____
on page _____
JOHN B. DUNKLE, Clerk Circuit Court
By _____, D.C.



NOTE: FOR DETAILS OF PORTION "X" SEE SHEET 2 of 4.



0270-305
14-45-42
45/47
PLAT NO. II - LE CHALET (P.U.D.)
P.P. 31, PGS. 217, 218 & 219

THIS INSTRUMENT WAS PREPARED BY JOSEPH M. TUCKER IN THE OFFICES OF ROSSI AND MALAVASI ENGINEERS INC., 675 PALM BEACH LAKES BOULEVARD, WEST PALM BEACH, FLORIDA. TELEPHONE: 737-6546.

ROSSI AND MALAVASI ENGINEERS, INC. WEST PALM BEACH, FLORIDA					
PARKWALK PLAT NO. 1 IN 4 SHEETS SHEET NO. 3					
Date	SEPT., 1982	Designed	R. ANDERSON	Scale	1" = 60'
Approved		Drawn	T. CURBELO	Job No.	4210-82
Checked				File No.	S-1289-00

SEE SHEET NO. 2